

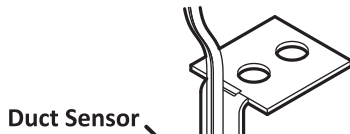
PLATINUM II

ZONE CONTROL SYSTEM



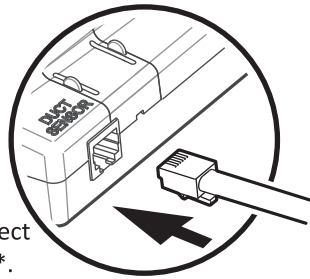
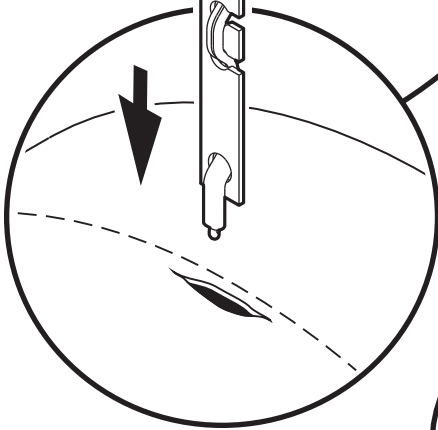
Duct Sensor Installation Instructions

- 1 Cut a small slot in the duct just in front of the outlet spigot of the heater or air conditioner, then feed the Duct Sensor down through the slot.



Duct Sensor

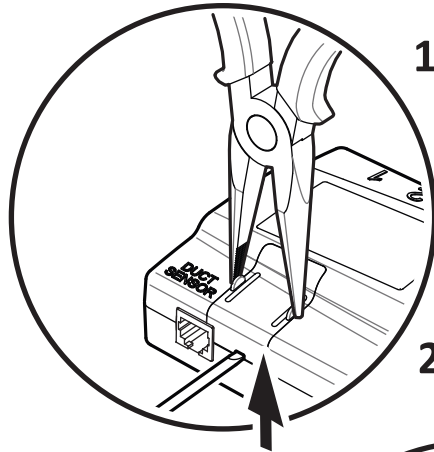
- 2 Use screw supplied to fix Duct Sensor bracket to the outlet spigot. Cover the slot with duct tape.



- 3 Plug Duct Sensor into correct socket on the Control Box*.

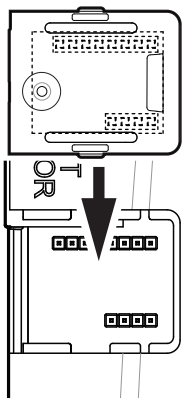
*For new dual Zone systems, either Control Box can be used to connect the Duct Sensor & Wireless Receiver but both must be connected to the same one. If upgrading an existing dual Zone system, the Duct Sensor & Wireless Receiver must be connected to the Control Box with the lowest Serial No., printed on the rating label on the front of the Control Box.

Wireless Receiver Installation Instructions



- 1 Use pliers and a small flat head screw driver as shown to remove blanking door.

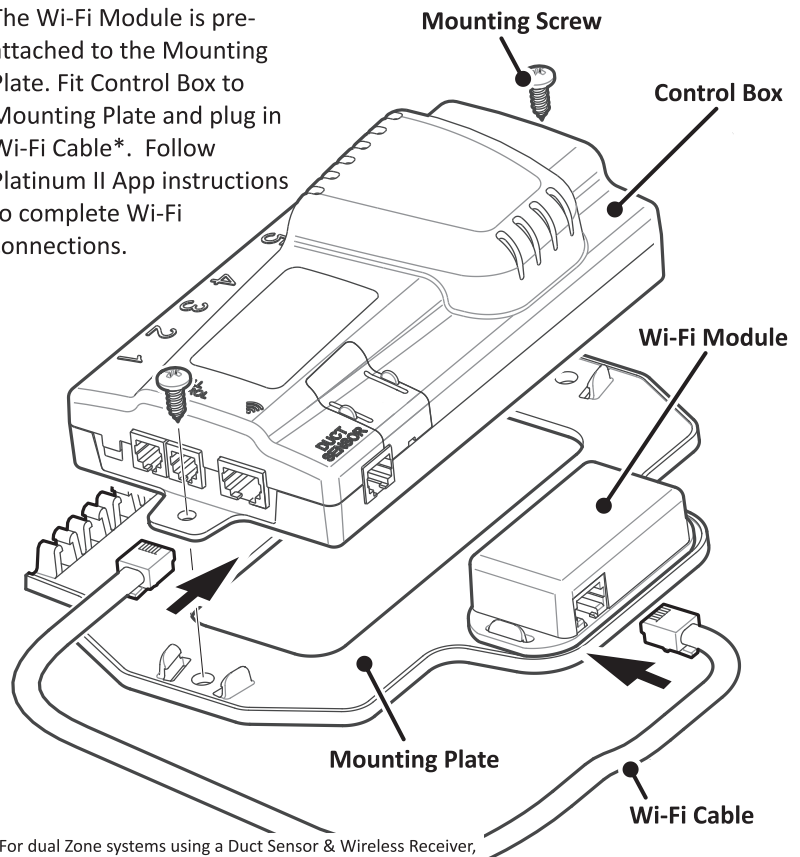
- 2 Align Wireless Receiver Module and gently push into place.



Wireless Receiver Module

Wi-Fi Module Installation Instructions

The Wi-Fi Module is pre-attached to the Mounting Plate. Fit Control Box to Mounting Plate and plug in Wi-Fi Cable*. Follow Platinum II App instructions to complete Wi-Fi connections.



Mounting Screw

Control Box

Wi-Fi Module

Mounting Plate

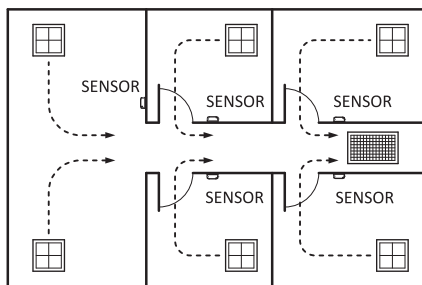
Wi-Fi Cable

*For dual Zone systems using a Duct Sensor & Wireless Receiver, the Wi-Fi Module must be plugged into the same Control Box

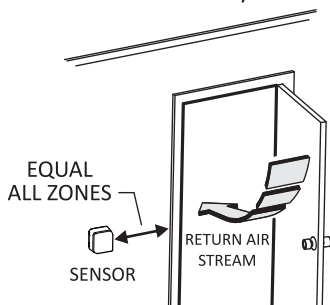
Wireless Zone Sensor Installation Instructions

IMPORTANT: Correct positioning of the Zone Sensors is essential for the best results. It is important to understand the difference between a “Joined” Zone system and a “Separated” Zone system. With a “Joined” Zone system the return air from one room flows through an adjoining room to get back to the return air duct. Positioning the Sensors near the doorway will give a false reading in these circumstances. See the diagrams below for best performance of the system.

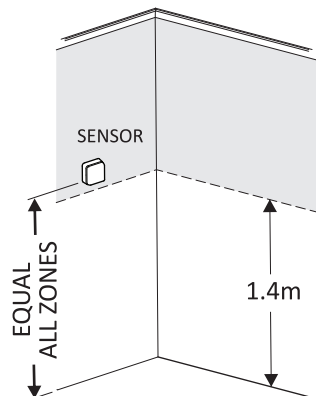
“Separated” Zones



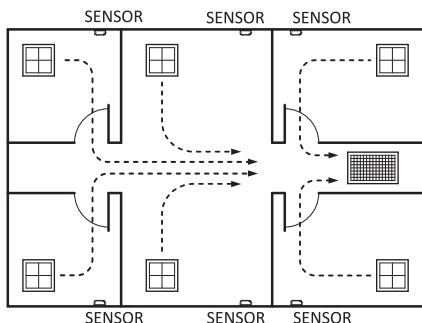
All Sensors may be installed in the return air stream, eg. near a doorway. If installing near a doorway, ensure all Sensors are in the same position relative to the doorway in each zone.



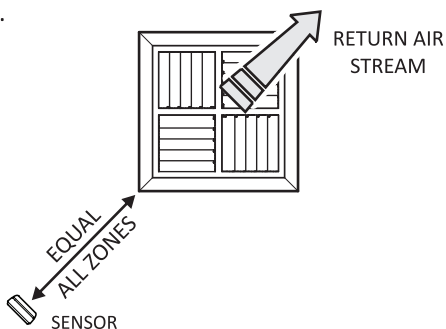
DO install all Sensors at the same level in each zone, within the shaded area.



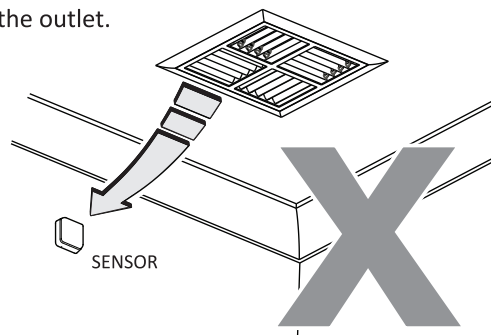
“Joined” Zones



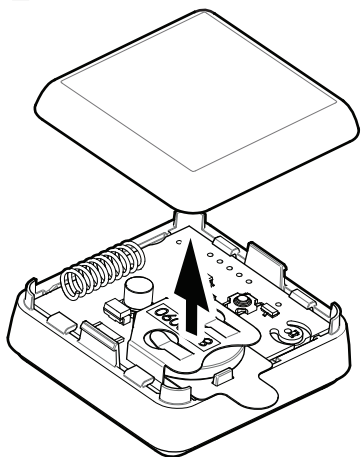
DO NOT install Sensors in return air stream. **DO** install Sensors equidistant from the outlet on the opposing side to the return air stream in each zone.



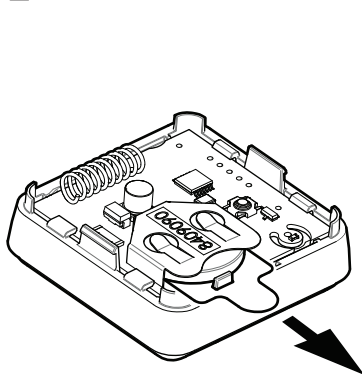
DO NOT install Sensors in the direct airflow of the outlet.



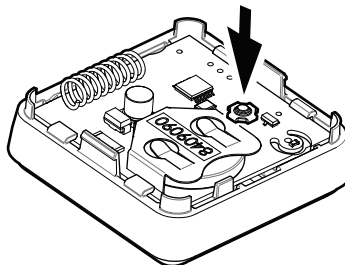
1 Remove Front Cover.



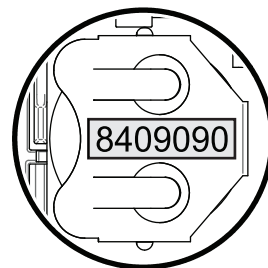
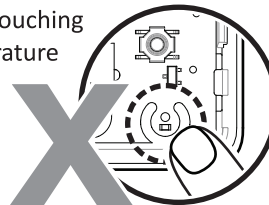
2 Remove Battery Shipping Tab.



3 Follow linking instructions in Installation Manual and press sender button when requested. Replace Front Cover.

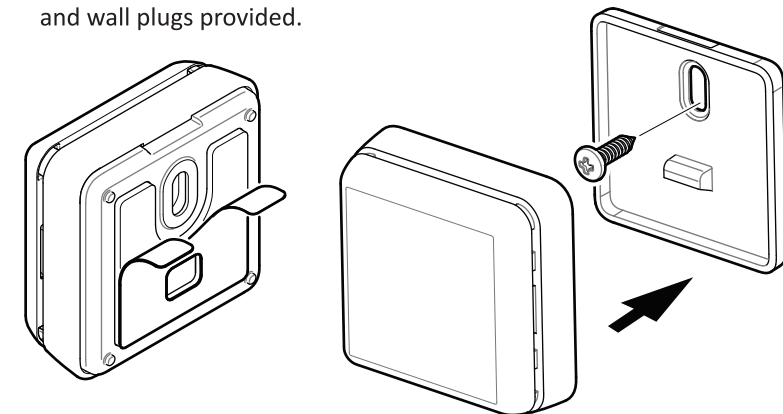


Avoid touching temperature sensor.



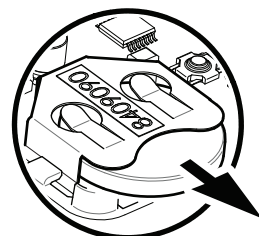
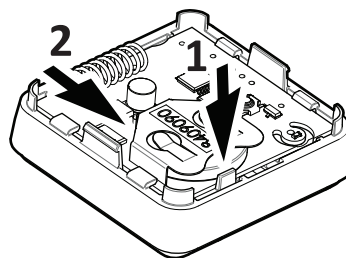
Record Serial No. in Zone Record Sheet in back of Installation Manual.

4 Determine position on wall, then peel off adhesive backing to fix Sensor to the wall, alternatively, unclip Back Plate and use screw and wall plugs provided.



Replacing Battery

To remove battery, simultaneously push down safety tab and push out battery. Dispose of battery thoughtfully.



Once battery is replaced, press sender button to reconnect.